

Label / Receipt Printer

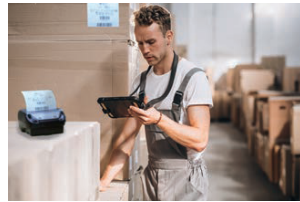
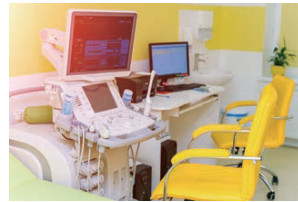
MP-B21L

Measuring
InstrumentPDA/
Smart Device

Barcode

Portable
PrinterMedical
Equipment

Label

Food Labels**Barcode Labels****Medical Healthcare Labels**

Ultra Small Mobile Label Printer

- Compact & Light Weight
- Drop rating: 1.8 m (6feet), IP rating: IP54
- Printing Speed: 153 mm/sec max
- SII Layout Editor: Label designing application (iOS, Android & Windows)
- SII URL Print Agent: PDF print application (iOS & Android)
- Simple Operation & Stylish Design
- Option Cradle for Charging

Made for
 iPhone | iPad | iPod

Model	MP-B21L
Method	Thermal line dot printing
Number of dots/line	384
Resolution(dots/mm)	8
Paper width(mm)	58 ^{*1}
Printing width(mm)	48
Printing speed(mm/sec) max	153 (5inch)
Outside diameter of paper roll(mm)max	φ51
Character matrix(HxW dots)	24 X 12, 24 X 24, 16 X 8, 16 X 16
Character dimensions(H×W mm)	3.0 X 1.5, 3.0 X 3.0, 2.0 X 1.0, 2.0 X 2.0
Type of paper	Roll paper, Label roll paper
Media sensor	Mark sensor, Gap sensor
Character type	Code page(17pages), Optional font, Downloaded character, User-defined character, JIS 1&2 Level Kanji, Special character
Barcode	UPC-A/E, JAN(EAN)8/13, ITF, CODE39, CODABAR, CODE93, CODE128, PDF417, QR Code, MaxiCode, Data Matrix, GS1 Databar, Aztec Code
Power supply	Li-Ion Battery
Communication interface	USB, Bluetooth®, W-LAN ^{*2}
Command	ESC/POS™ conformity, ZPL II™ conformity, CPCL conformity
Cutting method	Tear bar
Drop rating	1.8m ^{*3}
IP rating	IP54 ^{*3}
Operating Temperature(°C)	-20 to 55
Service life: Abrasion resistance (km)	50 ^{*4}
Dimensions (W×D×Hmm)	90 X 126 X 58 ^{*5}
Mass (g)	370 ^{*6}
Standard	FCC, CE, VCCI
bundled items	AC dapter ,Battery ,Belt crip ,Sample roll paper
Options	Cradle for charging, Single battery charger, Quad battery charger, Strap, Carrying case, USB cable
Software	Windows: Printer Driver / OPOS / POS for .NET / Utility / Layout Editor Android: Printer Class Library / URL Print Agent / Layout Editor / MAUI SDK / Utility iOS: Printer Class Library / URL Print Agent / Layout Editor / MAUI SDK / Utility

*1 Please inquire about support for narrow paper. *2 Selected model. *3 This number is test result based on SII procedures, not guaranteed value.
 *4 Use recommended thermal papers. *5 Excluding protrusion *6 with battery, without paper roll

ESC/POS™: Registered trademark of SEIKO EPSON CORP. Windows® is the registered trademark of Microsoft Corporation(USA).
 Android™ is a trademark of Google Inc. iPad, iPhone, iPod are trademarks of Apple Inc., registered in the U.S. and other countries.
 iOS is a trademark or registered trademark of Cisco in the U.S. and other countries and is used under license.

Specifications are subject to change without notice.

**Seiko Instruments Inc.**

Print System Division
 563, Takatsukashinden, Matsudo-shi, Chiba 270-2222, Japan
 Telephone:+81-47-709-1587 Facsimile:+81-47-709-1793
<https://www.sii.co.jp/sps/eg/>

Seiko Instruments U.S.A., Inc.

21221 S. Western Ave., Suite 250, Torrance, CA 90501, USA.
 Telephone:+1-310-517-7778 Facsimile:+1-310-517-8154
<https://sii-thermalprinters.com/>

Seiko Instruments GmbH

Siemensstrasse 9 D-63263 Neu-Isenburg, Germany
 Telephone:+49-6102-297-0 Facsimile:+49-6102-297-50100
 E-mail : info@seiko-instruments.de
<https://www.seiko-instruments.de>

Seiko Instruments Trading (H.K.) Ltd.

7 / F, Ying Industrial Building, 802 Lai Chi Kok Road, Kowloon, Hong Kong
 Telephone:+852-2494-5160 Facsimile:+852-2424-0901

Seiko Instruments Taiwan Inc.

2F., No. 143, Changchun Rd.,
 Taipei, Taiwan R.O.C.
 Telephone:+886-2-2563-5001 Facsimile:+886-2-2563-5580
<http://www.sii.com.tw/en/index.html>