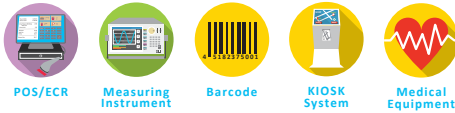


POS Printer

RP-E10 Series



- RP-E10 : Receipt top-exit / RP-E11 : Receipt front-exit
- Compact cube : 129mm x 129mm x 129mm
- Max printing speed : 350mm/sec
- High Reliability : 150km, 2 million cuts
- Wide variety of driver and utility software suite
- Large LED indicator (Multi-color)



Made for
iPhone | iPad | iPod

Model	RP-E10 (Receipt top-exit)	RP-E11 (Receipt front-exit)
Method	Thermal line dot printing	
Number of dots/line	576	
Resolution (dpi)	203 (8dots/mm)	
Paper width (mm)	58 ⁺⁰ / ₋₁ / 80 ⁺⁰ / ₋₁	
Printing width (mm)	54/72	
Speed (mm/sec)max	350	
Outside diameter of paper roll (mm)max	Φ83	
Inside diameter of paper roll (mm)	Φ12	
Character matrix (H x W dots)	24 x 12, 24 x 24, 16 x 8, 16 x 16	
Character size (H x W mm)	3.0 x 1.5, 3.0 x 3.0, 2.0 x 1.0, 2.0 x 2.0	
Type of paper	Roll paper, Timing mark roll paper (Built-in timing mark sensor)	
Character type	Code page: 14pages, Optional font, Downloaded character, User-defined character, JIS 1&2 level kanji, Special character	
Bar code	UPC-A/E, JAN(EAN)8/13, ITF, CODE39, CODABAR, Code93, CODE128, PDF417, QR Code, GS1 Databar, MaxiCode, Data Matrix	
Power supply (V)	Specified AC adapter, External power (DC24V±5%)	
Communication interface	USB, Serial, Powered USB, Ethernet	
Input buffer	16k bytes	
Command	ESC/POS™ conformity, Markup Language	
Cutting	Methods	Slide type
	Cutting type	Full cut, Partial cut (Leave center point)
Operating Temperature (°C)	5 to 45	
Service life	Abrasion resistance (km)	150 *1
	Life (cut)	2,000,000
Dimensions (W × D × H mm)	129.0×129.0×129.0 *2	
Mass (g)	Approx. 1300	
Standard	FCC, CE, VCCI, etc.	
Option	Wall mounting kit, Back plate	
Cash drawer	2 drivers (24V / 1A)	
Body color	2 colors : White / Black	
Software	Printer Driver/SDK, OPOS Driver, POS for .NET Driver, JavaPOS™, Android™ SDK, iOS SDK, Linux® CUPS Filter/SDK	

*1 Use recommended thermal papers. *2 Excluding protrusion

ESC/POS™ : Registered trademark of SEIKO EPSON CORP. Windows® is the registered trademark of Microsoft Corporation (USA). Android™ is a trademark of Google Inc. iPad, iPhone, iPod are trademarks of Apple Inc., registered in the U.S. and other countries. iOS is a trademark or registered trademark of Cisco in the U.S. and other countries and is used under license.

Software tools Convenient software tools available for assisting application development.

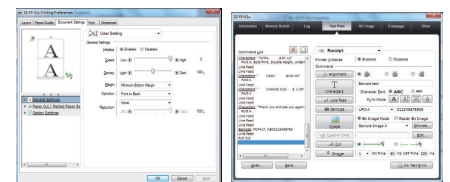
Driver and utility software

SDK : Status API, Devmode API (For Win32 API³ / .net API⁴)

³ ⁴ The Windows® API, informally WinAPI, is Microsoft's core set of application programming interfaces (APIs) available in the Microsoft Windows® operating systems. The Win32 API is for Windows® operating system.

Utility soft (Build on the Windows® driver)

- Memory SW setting,
- LOG management,
- USB serial ID setting,
- NV image registration,
- Code page registration



Specifications are subject to change without notice.