

## INSTRUCTION MANUAL

Thank you for purchasing the Seiko Beat Unit BU10. Please read this instruction manual carefully before using your BU10, as proper use is important to ensure the life of the product.

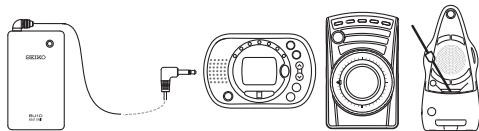
Store this instruction manual in a place that is readily accessible and refer to it regularly.

## PRECAUTIONS

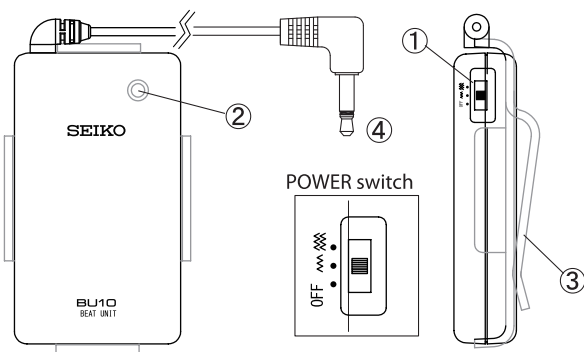
The following warnings and cautions are important in ensuring safe and proper use of the product, preventing injury to yourself and others, and preventing damage to your belongings.

- Do not disassemble, attempt to repair, or tamper with the product or battery.
- Do not handle the product with wet hands.
- Do not use or store the product in places where it may become wet such as in bathrooms, near sinks, or outdoors.
- Do not expose the batteries to fire.
- Use only the batteries specified for this product.
- Do not insert pins or other foreign objects into the product.  
In the event that such an object gets trapped in the device, cease use of the device and contact the store of purchase or a professional for assistance.
- Do not place the product on unstable surfaces.
- Do not intentionally throw or drop the product.
- Do not use or store the product in places where it may be exposed to extremely high temperatures such as near heaters, or devices that generate heat, in direct sunlight, or in vehicles.
- Do not use or store the product in places where it may be exposed to extremely high levels of humidity.
- Keep the product out of the reach of small children.
- Keep removed batteries and the battery lid out of the reach of small children. In the event that a child swallows these parts, contact a physician immediately.
- People with heart conditions (people with illnesses) must not use the product.
- Do not apply excessive force to the switch or body of the product.
- Do not mix old and new batteries or batteries of different types.
- Do not let leaked battery fluid come in contact with your skin.
- Do not use or store the product in dusty places or places prone to vibration.
- Do not use thinner or alcohol to clean the product.
- Do not place the product near your face or within the reach of small children.
- Perform the steps below immediately in the case of unpleasant smells, heat-buildup, discoloration, deformation, etc., during use or when stored.
  - (1) Turn off the product.
  - (2) Remove the batteries from the product.
- Replace all (two) batteries of the product at the same time. When installing new batteries, check that the (+) and (-) terminals are oriented correctly.
- Remove the batteries when depleted or when not using the product for a long period of time.

**When connected to a digital metronome (sold separately), this product allows tempo to be felt through vibration.**  
For usage instructions, please refer to the section entitled "HOW TO USE".



## NAMES OF PARTS



## ① POWER switch (also adjusts the strength of vibration)

Slide the POWER switch to turn the beat unit on and off. The POWER switch is also used to adjust the vibration strength.

☞ Gentle vibration ☞ Strong vibration

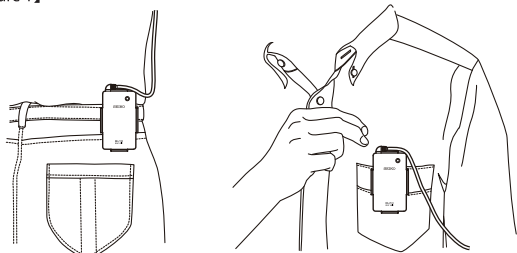
## ② Power Indicator

A red light is illuminated when the device is on (the POWER switch is in the ☞ or ☞ position)

## ③ Clip holder

Use the clip holder to attach the beat unit to your belt or clothing, as in Figure 1.

[Figure 1]



The clip holder can be attached in either direction.

## ④ Input plug (φ3.5mm)

Connect to the earphone jack of a digital metronome.

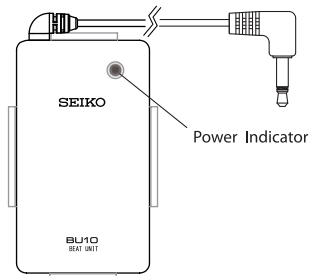
## HOW TO USE

## 【Before using】

- This device is designed to be connected to a Seiko digital metronome with a φ 3.5 mm earphone jack. We cannot guarantee that it will work with non-Seiko devices.
  - Before use, refer to the section entitled "BATTERY REPLACEMENT" and insert the batteries included with the product.
- The batteries included with the product are for functionality testing and their battery life may be shorter than expected.

- (1) Turn the POWER switch ON (the ☞ or ☞ position). The Power Indicator will illuminate, as in Figure 2.

[Figure 2]



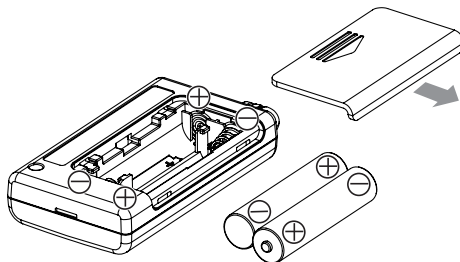
- (2) Insert the input plug into the earphone jack of a digital metronome.
- (3) Turn the digital metronome ON.
- (4) Turn the volume of the connected digital metronome to the highest setting and start the metronome.
- (5) The beat unit will begin to vibrate. Change the strength of the vibrations to suit your preference.
- (6) When you want to stop the vibrations, stop the metronome connected to the beat unit before turning the beat unit off.
- (7) After using the beat unit, be sure to turn the power off for storage.

## CAUTION

- The beat unit is a precision instrument. Dropping or otherwise causing an impact to the device or wetting the device may cause damage.
- This device works for tempos from 1-300 beats per minute.
- When this device receives standard sound input or a rhythm with a fast tempo, it will shut off automatically after a few seconds to conserve battery life. In this case, change the tempo settings of the attached metronome to within the range of this device (1-300 beats per minute).
- When removing the clip from a belt or clothing to which it is attached, do not pull forcefully. Pulling forcefully may result in injury or damage to the clip.
- Do not put the beat unit into direct contact with the skin when it is vibrating.
- Always turn the power off when the device is not in use. Leaving the power on will deplete the battery. When the power is on and the input plug is not connected to a metronome, external noise may activate the vibration motor.

## BATTERY REPLACEMENT

When it is time to replace the batteries, the vibrations will become weaker and the Power Indicator LED will flash in time with the vibrations. When this happens, change the batteries as soon as possible.



- (1) Slide the POWER switch to OFF.
- (2) Remove the clip holder. Remove the battery cover from the back side of the beat unit, as in the figure to the right. Remove both (two) depleted batteries.
- (3) Install two new batteries in the battery holder, making sure that the batteries are aligned with the polarity markings. Replace the battery lid.
- (4) After replacing the batteries, turn the beat unit on and confirm that the device functions normally.

- ※ Only AAA alkaline batteries and AAA rechargeable nickel-metal hydride batteries can be used in this device.
- ※ When inserting the batteries, be sure to follow the polarity indicator on the inside of the battery holder and insert the batteries in the correct direction.
- ※ Do not use different types of batteries together.  
Follow all local ordinances and regulations when disposing of the depleted batteries.
- ※ Store the removed batteries and battery cover out of the reach of small children.
- ※ In the event that a child swallows these parts, contact a physician immediately.

## SPECIFICATIONS

- Operating tempo range : 1 ~ 300 beats/min
- Vibration strength adjustment : Two levels (gentle/strong)
- Cable length : 140 cm
- Input Plug : φ3.5 mm monaural
- Battery : AAA alkaline batteries x 2 (AAA rechargeable nickel-metal hydride batteries may also be used)
- Usage temperature range : 5°C ~ 40°C
- Battery life : Approximately 10 hours \*1
- Dimensions/Weight : 40(W) x 70 (H) x 15 (D) mm, approximately 65 g (including batteries)
- Accessories : AAA alkaline battery x 2 (for functionality testing), Instruction manual, Clip holder

\*1: Under the usage conditions below, BU10 vibration strength: Strong, Connected device: SEIKO QUARTZ METRONOME SQ60, Connected device settings: Continuous use at tempo 120, beat 0

※ The design and specifications are subject to change without prior notice for product improvement.